

# INTRODUCING **CYOA**

CYOA has been chartering in the Virgin Islands for over 25 years. We are a small company and take pride in offering personal service, well-maintained boats and reasonable charter rates year round. We are located in Charlotte Amalie on St. Thomas, just 10 minutes from a modern airport with direct flights to the U.S. Our overseas guests easily connect through San Juan, Puerto Rico, or St. Maarten. Our local staff is ready to help you plan an exciting itinerary so you can enjoy the water—swim, snorkel, dive, sailboard or kayak—watch a regatta, hike the trails in a national park, enjoy duty-free shopping, or laze on the beach while sipping an island drink.

## **THE CYOA FLEET**

CYOA has state-of-the-art boats that sail well, handle with ease and have additional creature comforts for cruising the Caribbean. Hunter, Fontaine Pajot, Jeanneau, Beneteau and Mainship are some of the very well-recognized names in our fleet. Be sure to look over our fleet guide to learn about each model's features. The number and type of people in your group and the amount of privacy desired generally influence which boat to choose. Since CYOA specializes in one-on-one checkouts aboard the boat you charter, you'll be confident in its operation before you leave the dock.

## **THE VIRGIN ISLANDS**

The U.S. and British Virgin Islands are neighbors. All the islands are in easy sight of one another; the water is deep, and the skies clear. Customs and immigration stops are simple. Everyone accepts U.S. dollars and credit cards. There are many options for eating, shopping and entertainment, as well as for extending your vacation a few days at a fine hotel or resort. The Spanish Virgin Islands are just a few miles away and have been such a well-kept secret that most don't realize the beautiful anchorages on Culebra and Vieques are on American soil!

## **SMOOTH SAILING**

We believe that "planning made simple" makes a vacation even better, and provide comprehensive chart checkouts for every guest. Our staff will gladly answer any questions you have about chartering, and help you determine if you are qualified to bareboat, or if you would prefer to sail with a skipper. You can also visit our website to learn more about the Virgin Islands and charter details such as insurance, cancellations, qualifications, books to read, hotel accommodations, and suggested itineraries.

## **EASY RESERVATIONS**

Simply call our toll-free number or visit our website. If you know how many people will be chartering with you and have some cruising dates in mind, we are happy to place a 48 hour hold on the boat while you finalize your travel plans.

## **ALL CYOA CHARTERS INCLUDE:**

A personalized and thorough checkout of your yacht, including chart briefing & brief test sail  
Roller furling jib | Bimini top | RIB Inflatable tender w/outboard engine | CD stereo w/cockpit speakers  
Full battened mainsail or in-mast furling | VHF Radio | Depth sounder | Knot meter | Auto pilot  
Refrigeration | Galley gear | Bath & bed linens including extra bath towels | Fans in sleeping cabins  
Fresh water transom shower | Cockpit cushions | Snorkeling gear  
BBQ charcoal grill | First aid kit and tool kit | Basic starter kit

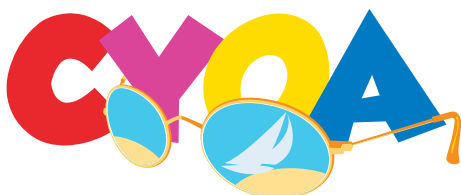
## **SOME BOATS HAVE EXTRA GEAR:**

GPS | Generator | Air conditioning | DVD player

## **OPTIONS INCLUDE:**

Provisioning | Beverages | Teaching skippers | Skipper guides  
Sailboards | Kayaks | Scuba gear

## **CONTACT US TODAY**



YACHT CHARTERS

[www.cyoacharters.com](http://www.cyoacharters.com)

St. Thomas, USVI 00802

800-944-2962 or 340-777-9690

# 2 0 0 9 C H A R T E R R A T E S

## CATAMARAN

	<b>Season A</b> 12/20 - 01/04 02/12 - 04/04	<b>Season B</b> 01/05 - 02/11 04/05 - 04/25	<b>Season C</b> 04/26 - 06/06 11/01 - 12/06	<b>Season D</b> 06/07 - 10/31 12/07 - 12/19
2007 Mahe 36-2	\$4,500	\$4,000	\$3,500	\$3,000
2004 Jaguar 36-4	\$5,300	\$4,700	\$4,100	\$3,800
2002 Athena 38-4	\$4,900	\$4,300	\$3,800	\$3,300
2006 Lavezzi 40-4 w a/c	\$6,500	\$5,800	\$5,200	\$4,500
2006 Lavezzi 40-4	\$5,900	\$5,200	\$4,600	\$3,900
2003 Belize 43-3	\$6,300	\$5,500	\$4,900	\$4,200
2001 Belize 43-4	\$7,200	\$6,300	\$5,600	\$4,800
2007 Bahia 46-4	\$10,000	\$9,000	\$8,000	\$7,000
2004 Bahia 46-4	\$9,000	\$8,000	\$7,000	\$6,000

## MONOHULL

	<b>Season A</b>	<b>Season B</b>	<b>Season C</b>	<b>Season D</b>
1997 Hunter 376-2	\$3,000	\$2,600	\$2,300	\$1,900
2004 Beneteau 393-3	\$3,700	\$3,200	\$2,800	\$2,400
1995 Hunter 430-2	\$3,550	\$3,100	\$2,700	\$2,200
1997 Hunter 450cc-2	\$3,800	\$3,400	\$2,800	\$2,400
2008 Hunter 45DS-3	\$5,000	\$4,600	\$3,800	\$3,400
2008 Jeanneau 45DS-1	\$4,600	\$4,200	\$3,400	\$3,200
2006 Hunter 46-4	\$4,900	\$4,500	\$3,700	\$3,300
2008 Hunter 49-3	\$5,800	\$5,300	\$4,800	\$4,100
2009 Beneteau 49-3	\$5,950	\$5,450	\$4,950	\$4,250
2009 Jeanneau 50DS-1	\$6,200	\$5,700	\$5,200	\$4,500

## POWER

	<b>Season A</b> 12/20 - 01/04 02/12 - 04/04	<b>Season B</b> 11/01 - 12/19 01/05 - 02/11 04/05 - 05/31	<b>Season C</b> 06/01 - 10/31
1997 Mainship 390-2	\$4,300	\$3,600	\$3,300
2005 Cumberland 44-3	\$9,500	\$8,000	\$7,300
2004 Cumberland 44-4	\$9,900	\$8,500	\$7,800

## NOTES ON THESE RATES:

All rates are for 7 nights, fuel is extra. Minimum charter period is 4 nights, charters of 4 or 5 nights add 10% to daily rate. Charters start and end at noon. Sleepaboards, if available, are one half the daily rate - minimum of \$150 - and only offered in conjunction with charters of 7 nights or longer. Sleepboard boarding is at 4PM. All boats come with a RIB inflatable and a 9.9 or 15hp outboard motor. There is a 5% premium for all charters over Christmas & New Years - please call for exact dates.

## LONG TERM DISCOUNTS:

Sail Boats: 10 days or more in Season A take off \$300; 10 days or more in Season B & C take off 10%; 10 days or more in Season D - Catamarans take off 15% and Monohulls receive 10 nights for the price of 7 (equal to 30%). Power Boats: 10 days or more in Season A take off \$300; 10 days or more in Season B take off 10%; 10 days or more in Season C take off 15%. Subject to restrictions, contact us for specific quotations.

VESSEL CDW	DAILY RATE	DAMAGE DEPOSIT:
Catamaran	\$35	\$500
Power	\$50	\$1000
Monohull	\$35	\$250
Tender	\$10	\$100

Effective 10/1/2008 for all new bookings



YACHT CHARTERS

Sail Cats | Power Cats  
Monohulls | Trawlers  
Bareboat | Skipped